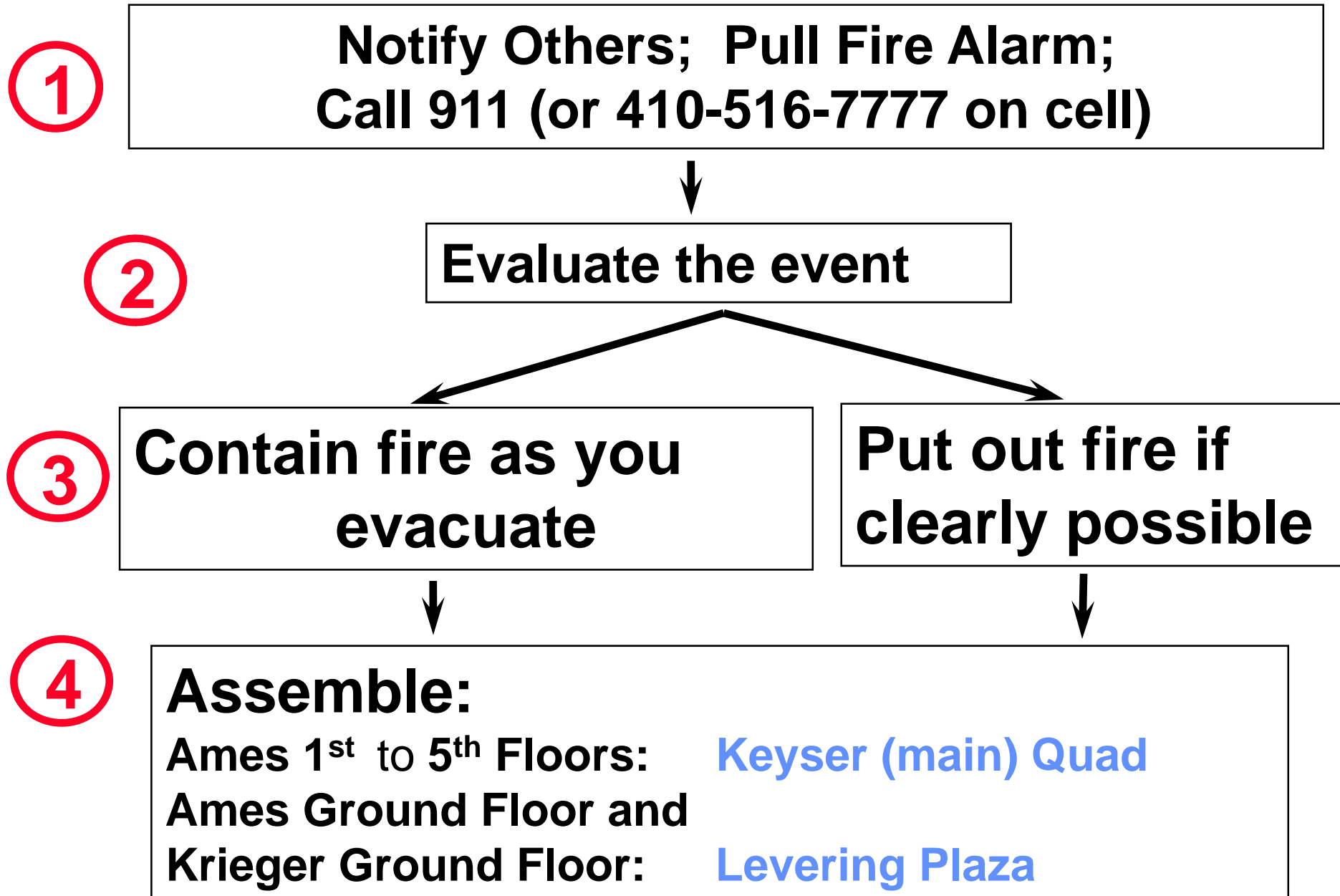


Safety Procedures for
Laboratory Fires
and
Chemical Spills

Preventing Mistakes that Lead to Fires and Spills:

- **Pay Attention** to what you are doing! Lab accidents happen most often when you are cleaning up or doing something you think isn't dangerous. Be wary of placing any container with fluid near a ledge or near the edge of a bench-top.
- **If you must work with open flame**, keep all solvents at a distance, and be cognizant of concerns (loose clothing, hair, etc.)
- **Always double check the label before pouring anything** (waste or otherwise). **Never assume that a bottle is reagent or waste just by its color or size!**
- **Properly label your reactors and containers.**
(Small bottles with cryptic labels should be grouped in a secondary container with a very clear label on that container. Do not mix different solvents in the same secondary container.)
- **Hoods are not meant for chemical storage.** If you're not using certain chemicals, put them away. If the hood has to be used for storage of nasty chemicals, find a different hood to run your work.
- **Be cautious with fluids near electrical devices** of all kinds. Short circuits and sparks are often causes of fires.

Major Fire Procedure



Chemical Spill Procedure

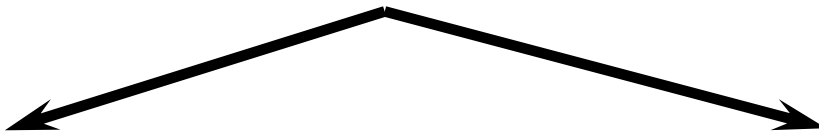
①

Evaluate Event and Notify Others



②

Confine the Event (Spill Kits)



③

Evacuate

Clean-up



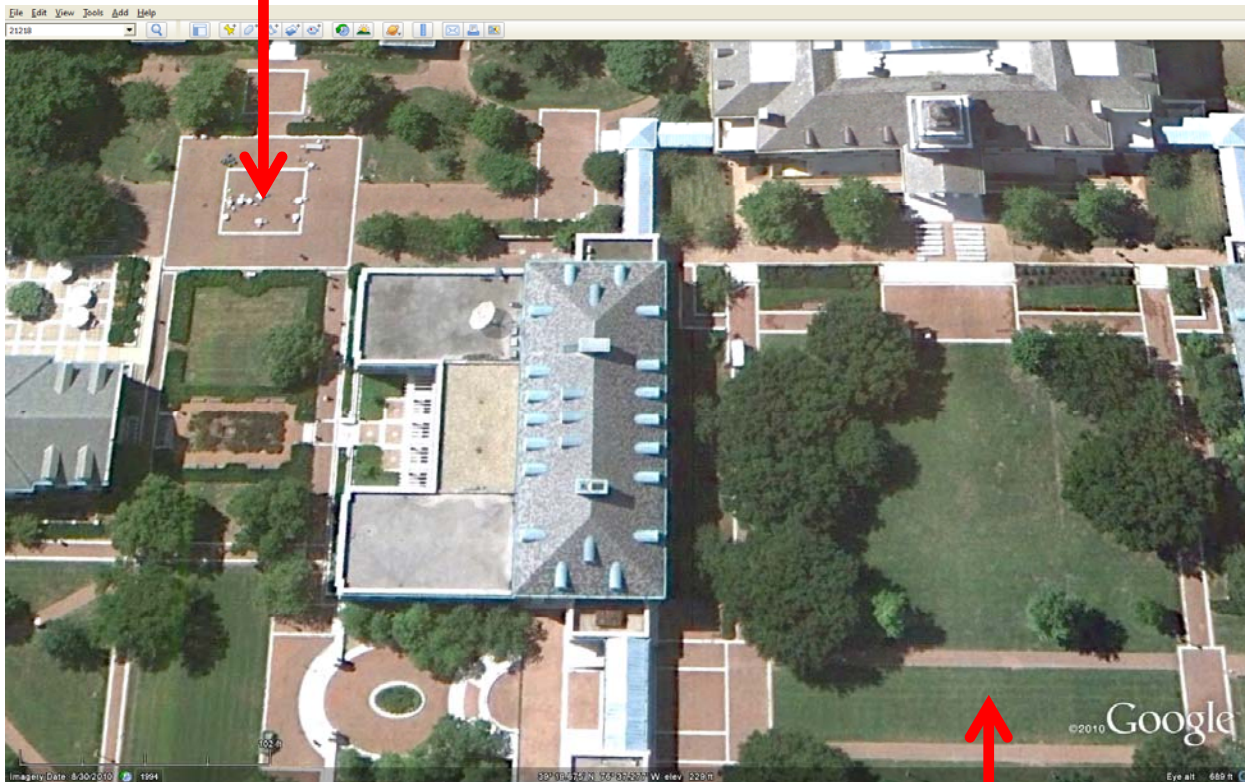
④

**Call (410) 516-7777
or
HSE: (410) 516-8798**

**Questions?
Call HSE
(410) 516-8798**

Where to Gather with Fire Alarm

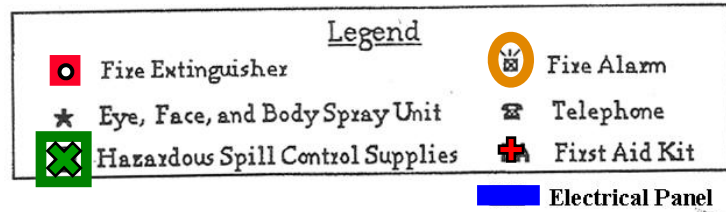
**Krieger Labs and Ames Ground Floor
(center, Levering Plaza)**



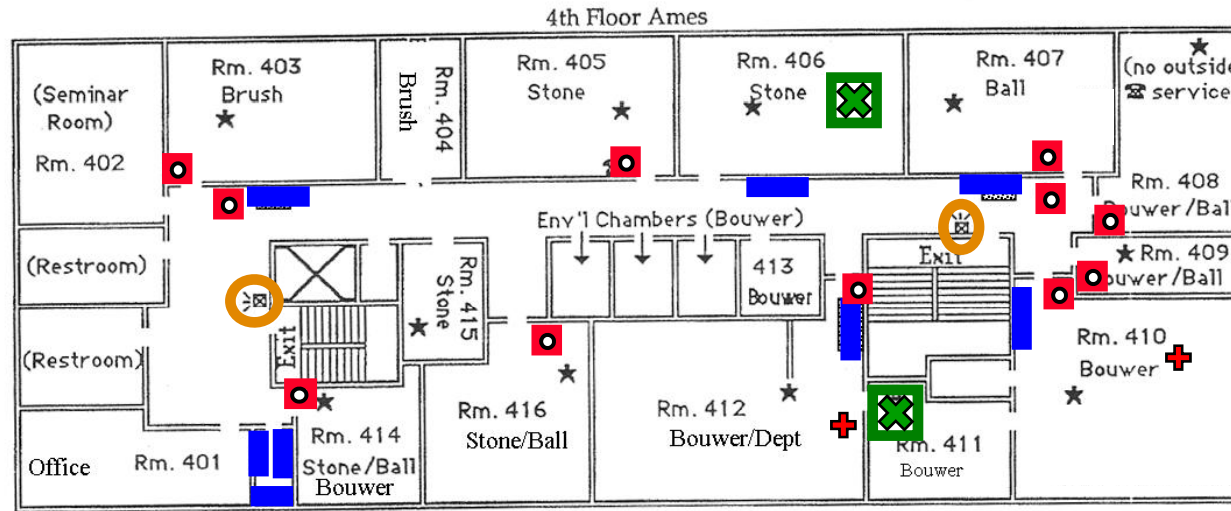
**Ames 1st to 5th floors
(center, Keyser Quad)**

Safety Equipment Location

Ames Hall Labs

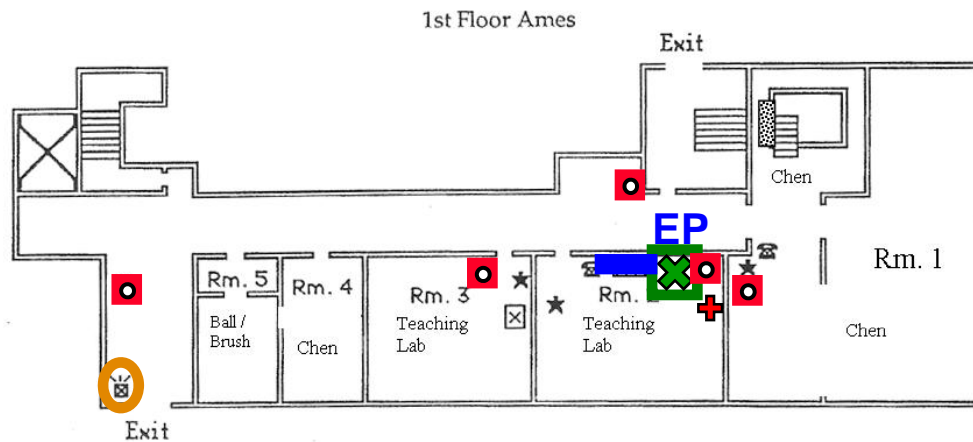


4th Floor:



3 panels in elec. closet:
rm 414, env. chmbrs & stills

Ground Floor:



Krieger Labs

